



STROKER PRO SERIES ***High Output Drivers***



**CUMPCLI.0T/CUMPCCL6.5/
CUMPCCL8.0/CUMPCCLIO**

USER MANUAL

Cerwin Vega Mobile Subwoofers

Congratulations for purchasing a Cerwin Vega Mobile Pro Driver for your car audio system. You have chosen Cerwin Vega Mobile brand because you deserve the best!

Cerwin Vega Mobile Pro Drivers are designed and engineered to reproduce extreme sound in and out side your vehicle! Authorized Cerwin Vega Mobile dealers can help guide you with various applications and technical information in order to customize your sound system according to your own listening preference. It is highly recommended that you have your new Pro Drivers installed by an authorized Cerwin Vega Mobile dealer to ensure that you receive the ultimate listening experience!

If you decide to install the Pro drivers by yourself, please thoroughly read through this manual before getting started. This manual will help familiarize yourself with this drivers and guide you through the installation process and procedures with recommended enclosure designs for this particular product.

Please contact your local authorized Cerwin Vega Mobile dealer if you have any questions regarding the instructions in this manual or the Pro Drivers application capabilities.

If you require additional assistance, please contact the Cerwin Vega Mobile Technical Support Department during business hours at 213.261.4161

Features/Specifications

The next generation of Cerwin Vega Pro Audio Mobile drivers features and specifications are on the next few pages. Makes sure to read this manual and get to know your drivers and the many applications and set up scenarios available to you.

CUMPCLI0

- 10" PRO Full-Range Speaker
- 500W MAX/250W RMS Power Handling
- Heavy duty industrial cast aluminum basket
- Advanced Voice Coil heat sink design for better heat dissipation
- 2.5" Single Layer high temp voice coil with black coated VC former
- Voice Coil Bias control for precise tuning
- High Density, High B/L motor structure for high power handling
- Patent Pending design
- Optional Press Fit Expanded Metal Grill (part# CUMPCLI0G)

CUMPCL8.0

- 8" PRO Full-Range Speaker
- 400W MAX/200W RMS Power Handling
- Heavy duty industrial cast aluminum basket
- Advanced Voice Coil heat sink design for better heat dissipation
- 2.0" Single Layer high temp voice coil with black coated VC former
- Voice Coil Bias control for precise tuning
- High Density, High B/L motor structure for high power handling
- Patent Pending design
- Optional Press Fit Expanded Metal Grill (part# CUMPCL8G)

CUMPCL6.5

- 6.5" PRO Full-Range Speaker
- 200W MAX/100W RMS Power Handling
- Heavy duty industrial cast aluminum basket
- Advanced Voice Coil heat sink design for better heat dissipation
- 1.75" Single Layer high temp voice coil with black coated VC former
- Voice Coil Bias control for precise tuning
- High Density, High B/L motor structure for high power handling
- Patent Pending design
- Optional Press Fit Expanded Metal Grill (part# CUMPCL6.5G)

Optional Grills

CUMPCLI0G

- 10" PRO Custom Formed/Powder Coated Steel Grill

CUMPCL8G

- 8" PRO Custom Formed/Powder Coated Steel Grill

CUMPCL6.5G

- 6.5" PRO Custom Formed/Powder Coated Steel Grill

CUMPCL4.0

- 8" PRO Full-Range Speaker
- 400W MAX/200W RMS Power Handling
- Cast Aluminum Alloy Basket
- Proprietary Lightweight Paper Ribbed Cone
- Cast Aluminum Phase Plug
- Oversized Spring Loaded Terminals
- Re-buildable Quick Replacement Design (part# CUMPCL4.0TD)

CUMPCL1.0T

- 1" Compression Extreme Output Tweeter
- 100W MAX/50W RMS Power Handling
- Composite Rubber Mounting Frame
- 12dB Crossover included for maximum protection
- Re-buildable Quick Replacement Design (part# CUMPCL1.0TD)

Replacement Tweeter Diaphragms

CUMPCL4.0TD

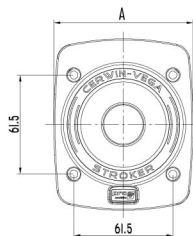
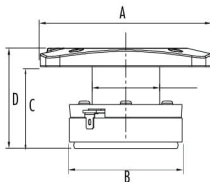
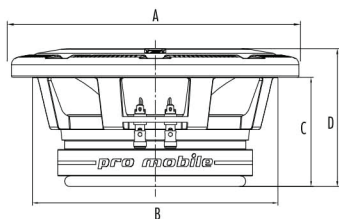
- STROKER PRO 4" REPLACEMENT TWEETER DIAPHRAGM

CUMPCL1.0TD

- STROKER PRO 1" REPLACEMENT TWEETER DIAPHRAGM

Physical Dimensions

Dimension	Unit	CVMPCL6.5	CVMPCL8	CVMPCL10	CVMPCL4.0	CVMPCL1.0
Total Diameter (A)	in. (mm)	7.08 (180)	8.54 (217)	19.66 (271)	TBD	3.4X4.19(86.5X106.5)
Mounting Diameter (B)	in. (mm)	5.76 (146.4)	7.3 (186)	9.25(235)	TBD	2.75(70)
Mounting Depth (C)	in. (mm)	2.93 (74.5)	3.24 (82.5)	4.57 (116.25)	TBD	2.0(52)
Total Depth (D)	in. (mm)	3.74 (95)	4.09 (104)	5.5 (141)	TBD	2.5(63)



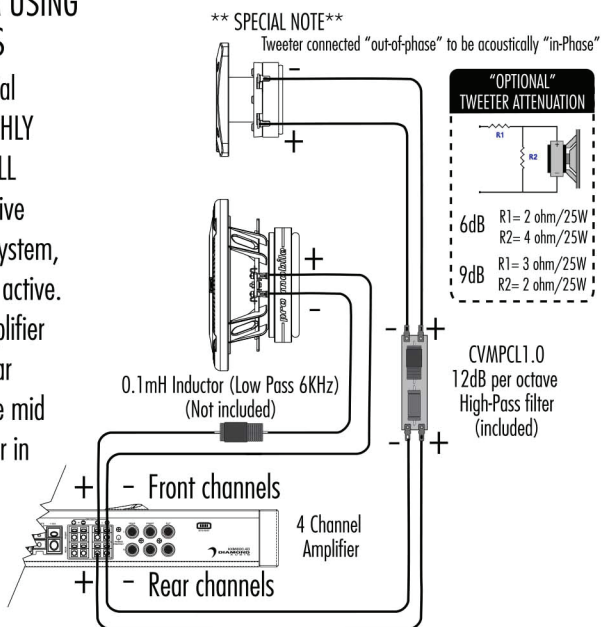
Thiele/Small Parameters

Parameter (unit)	CVMPCL6.5	CVMPCL8.0	CVMPCL10	CVMPCL1.0	CVMPCL4.0
SPL (dB)	93.2	95	95.9	105	TBD
Re (Ω)	3.47	3.30	3.49	3.7	N/A
Qms	9.96	14.0	17.0	N/A	N/A
Qes	0.58	0.42	0.45	N/A	N/A
Qts	0.55	0.41	0.44	N/A	N/A
Fs (Hz)	128.1	98	85	2000	N/A
Vas (L)	3.62	9	18.2	N/A	N/A
Cms (mm/N)	0.136	0.132	0.107	N/A	N/A
Mms (g)	11.3	20	32.7	N/A	N/A
Sd (m ²)	0.0137	0.029	0.035	N/A	N/A
BL (T*M)	7.41	9.8	11.6	N/A	N/A
Xmax (mm)	1.3	1.5	1.7	N/A	N/A
Pwr (W) NOM/MAX	100 / 200	150 / 300	200 / 400	50/100	TBD

System Design - Passive/Active

TYPICAL "BI-AMPED" SYSTEM USING PASSIVE CROSSOVERS

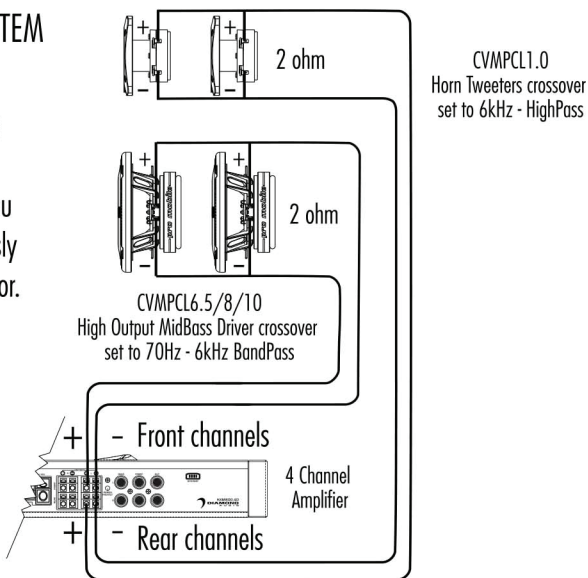
The CVMPCL1.0 comes with a special 12dB per octave crossover. It is **HIGHLY** recommended that this be used at ALL times - **UNLESS** you are using an active crossover set at above 4kHz. This system, shown is "Bi-Amped, but not 'Fully' active. Front channels of this 4 channel amplifier are driving the mid bass drivers. Rear channel are driving the tweeters. The mid bass is shown with a 0.1mH inductor in series to cross over the midbass at 6Khz with a 6dB roll-off. This setup makes it easier to adjust level of this midbass versus the tweeter.



System Design - Fully Active

TYPICAL "FULLY ACTIVE" SYSTEM

The CVMPCL1.0 horn tweeters and Midbass drivers can be run in multiple pairs. It is **HIGHLY** recommended to use some kind of EQ/processor. IF you plan on doing ALL active setup, seriously think about purchasing a DSP processor. Using a DSP processor makes it much easier to control and tune your system.



(ONLY RIGHT CHANNEL SHOWN)

Installation

Installing the Speakers

Your new Cerwin Vega Mobile series speakers were designed with the flexibility to be installed in multiple locations. However, to ensure the best performance possible, it is important to isolate the front sound waves of the speaker from its rear sound waves. This is done by securely mounting the speaker to a flat surface known as a baffle. Make sure to seal the speaker to ensure there are no air leaks around its frame.

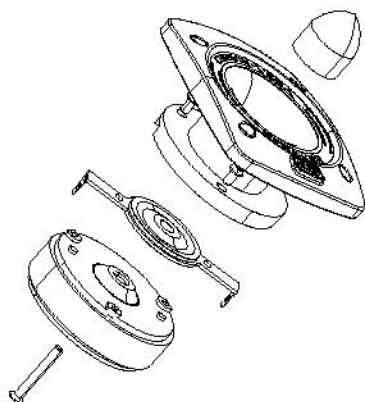
Selecting a Location

Since these are "Pro Drivers" we know the likelihood of mounting in stock locations is pretty non-existent. This means basic audio concepts should be thought of when installing. If installing multiple midbass or tweeter drivers it is ALWAYS best to mount in vertical rows. This gives the best vertical and horizontal dispersion characteristics of the drivers. Venting (or porting) is not necessary. Multiple midbass drivers should be used to every single horn driver (horn tweeters tend to be 10dB louder than the mids). Line the walls of the enclosures with deadliner and polyfil. If you want to build vented enclosures the Thiele/Small parameters are on page 4. Our recommended computer modeling software is WinISD Pro. Or call us and we can help.

We HIGHLY recommend that for the BEST sound you put a sound deadening mat on the door "skin", The more "damped" your car is.... the better it will ultimately sound!!!

Tweeter Diaphragm Replacement

The Cerwin Vega Mobile CVMPC1.0 and CVMPC4.0 tweeter diaphragm can be replaced. But you must be very careful doing it. The part number is CVMPC4.0TD for the 4 inch tweeter, and CVMPC1.0TD for the 1 inch tweeter. Below is a cutaway drawing to show you how it is done. More detailed instructions come with the replacement diaphragm on how to replace.



Warranty

Thank you for purchasing a Cerwin Vega Mobile product and we hope to provide you with countless hours of listening enjoyment.

Please take a brief moment to register your new product. By registering your new product, you will receive benefits such as:

- Important product notifications that may pertain to your purchase.
- Confirmation and record of ownership in case of loss or theft.
- Knowledgeable customer service and technical assistance pertaining to your product.

Register your new product by completely filling out this Product and Warranty Registration card or register online at www.cerwinvegamobile.com.

Registration is voluntary and failure to register will not diminish your limited warranty rights.

Limited Warranty (U.S.A.)

Cerwin Vega Mobile warrants all of our amplifiers and speakers to be free of defects in materials and workmanship for a period of one (1) year.

This warranty is non-transferable and applies only to the original purchaser from an authorized Cerwin Vega Mobile dealer. If service is required and necessary under this warranty due to manufacturing defect or malfunction, then Cerwin Vega Mobile will repair and/or replace defective product with either new or re-manufactured like product at no charge at our discretion.

Damage to product caused by the following will not be covered under this warranty: abuse, accident, misuse, neglect, modifications, repairing attempts, seller/installer misrepresentation.

This warranty does not cover any incidental, consequential, or cosmetic damage due to accidents or normal wear and tear, nor does it cover the cost of removing or reinstallation of the product.

Warranty is void if the product's serial number has been removed, defaced, and/or tampered with.

Warranty Procedure:

We recommend that you contact your Cerwin Vega Mobile authorized dealer where your original purchase was made to initiate all warranty claims. Our authorized dealers can guide you through the warranty procedure to ensure that your claim will be processed in a timely manner. All warranty returns must be accompanied with a proof of purchase (a copy of the original sales receipt) and be shipped freight prepaid to our facility with an RA (Return Authorization) number clearly marked on the outside of the package. Direct returns from consumers or non-authorized dealers will be refused if shipped without a valid RA number authorized by Cerwin Vega Mobile beforehand.

INTERNATIONAL

Products purchased outside of the U.S.A. are covered only by that country's distributor and not by Cerwin Vega Mobile U.S.A.

Please Ship All Warranty Claims With Pre-Authorized RA Number To:
CY&DA Holdings, Inc.
ATTN: Customer Service Department
1225 E. 7th St.
Los Angeles, CA 90021 USA

Please Contact Customer Service for Further Warranty Information:
U.S.A.
Tel: 213-261-4161 / Fax: 213-947-4767

MAKING IT LOUD SINCE 1954



1225 E. 7th St. • Los Angeles, CA 90021 USA

P 213-261-4161 • F 213-947-4767

WWW.CERWINVEGAMOBILE.COM

**©2017 Cerwin Vega Mobile. All rights reserved.
(a division of CV & DA Holdings, Inc.)**